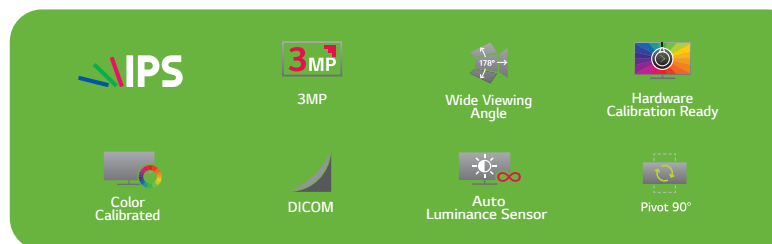
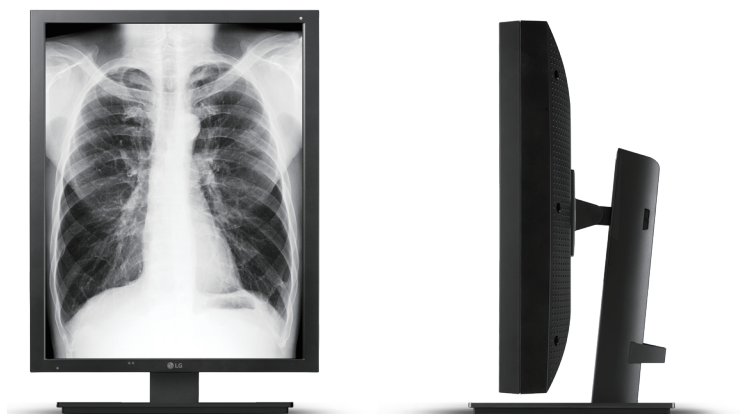


LG 3MP Diagnostic Monitor



21HK512D

Optimized Image Quality for Diagnostic Review

3MP* IPS Display & 1000nits(Typ.), 800nits(Min.) with sRGB 99%

The 21.3-inch 3MP IPS display with 1000nits(Typ.), 800nits(Min.) brightness facilitates precise diagnoses of medical images from CT and Angiography, as it allows medical professionals to easily distinguish even delicate detail. Plus, it enhances the visibility of text and illuminates obscure abnormal findings through high brightness with drastic contrast.

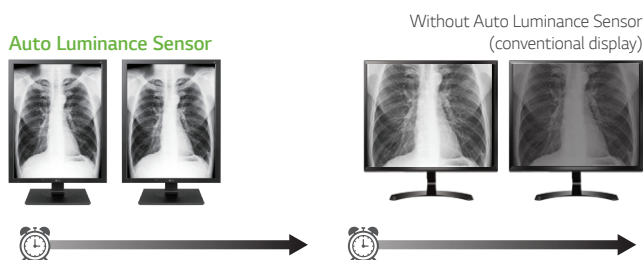
*3MP(Mega Pixel): 2048 x 1536



Reliable Image for Diagnosis

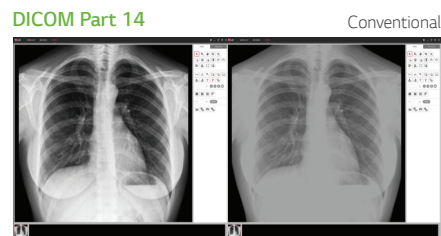
Auto Luminance Sensor

Auto Luminance Sensor measures the backlight brightness stability and automatically compensates for brightness fluctuations caused by aging for a consistently stable display during the usage life.



DICOM* Part 14

To ensure the most accurate, consistent shading possible for medical images, the LG diagnostic monitor measures and sets every grayscale tone on the production line to produce a monitor compliant with DICOM Part 14.



*DICOM: Digital Imaging and Communications in Medicine.

Productive, Efficient Work

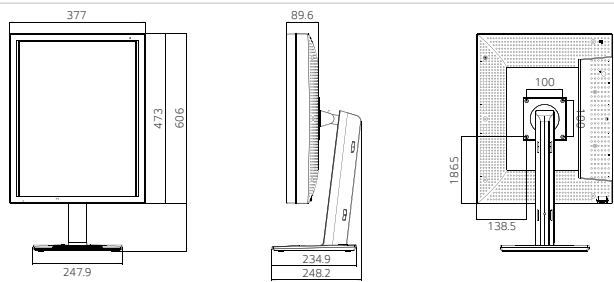
Remote & Self Calibration

Remote and self calibration help to increase productivity and efficiency without the need for additional operating costs or manpower. Remote software allows calibration to be managed remotely and automatically. It improves image quality and the consistency in which medical images are displayed by maintaining accurate values.

Ergonomic Stand with Pivot

Pivot provides a customizable multi-monitor configuration according to the user's needs based on diagnostic software, and the lower cover between the two monitors does not interfere with on-screen contents as it pivots in different directions.

Specification

Model Name		21HK512D
External Dimension		
Panel	Type	IPS
	Size	21.3" (4:3)
	Native Resolution	2048 x 1536
	Pixel Pitch	0.2115 mm x 0.2115 mm
	Display Colors	10bit
	Viewing Angles	178/178
	Brightness	1000cd/m ² (Typ.), 800cd/m ² (Min.)
	Contrast Ratio	1400:1 (Typ.)
Response Time	30ms (Typ.)	
Video Signals	Input Terminals	DVI-D/DP1.1a
USB	Function	1 upstream, 2 downstream
	Standard	USB/RJ45
Power	Power Requirements	100-240Vac, 50/60Hz
	Power Consumption	85W
Sensor		Auto Luminance Sensor, HW Calibration(Remote/Self Calibration), Front Sensor
Certifications & Standards		UL60601 3.1rd, CB(EN60601-1-2 4th), CB(60590), CE MDD(Class 1), FCC-B, AAPM TG18, DIN6868-157, JESRA X-0093, IEC62563-1
Supplied Accessories		Power Cord, Factory Calibration Report, Warranty Card, DVI Cable, DP Cable, CD Manual
Physical Specifications	Weight(With Stand)	9.76kg